



Janson Close, London, E15

BUTLER  STAG



Spacious one bedroom apartment with outside space in a fantastic location close to Westfield Shopping centre and Stratford international Station.



- One bedroom
- Recently redecorated
- Private balcony
- One bathroom
- Great condition
- Fantastic location

This recently redecorated ex-local property is finished to a good standard. The living area is large and has access to a private balcony. The bedroom is spacious and comes with enough room for a desk or a king size bed.

Janson Close is well located close to Westfield Shopping centre with lots of bars, restaurants and boutiques. Stratford Station and Maryland TFL station are both within walking distance.

The property is available from 24th September.

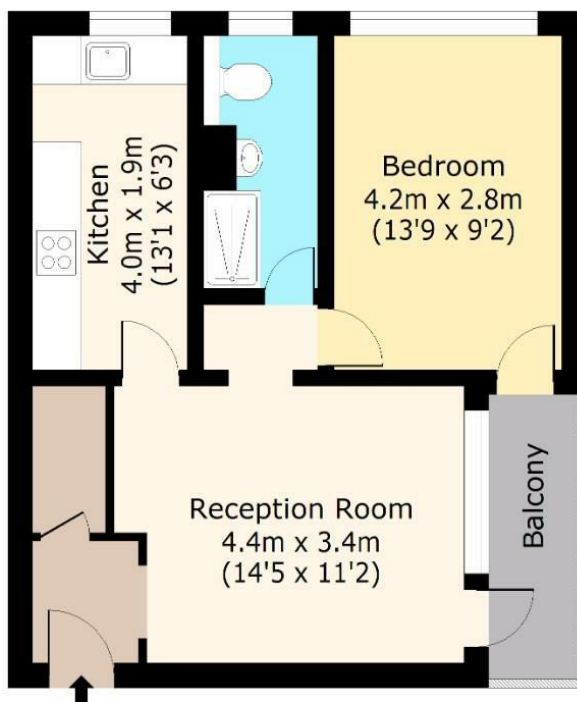
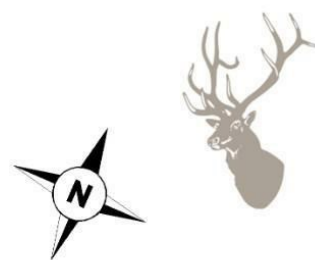




Janson Close, E15

Third Floor

Approx. 45.71 Sq. meters (492 Sq. feet)



Total area: approx. 45.71 Sq. meters (492 Sq. feet)

For illustration purposes only - not to scale

www.lpaplus.com

IMPORTANT NOTICE - These particulars have been prepared in good faith and they are not intended to constitute part of an offer or contract. We have not performed a structural survey on this property and the services, appliances and specific fittings have not been tested. All photographs, measurements, floor plans and distances referred to are given as a guide and should not be relied upon.

BUTLER & STAG

☎ 020 8102 1236

🏠 508 Roman Road, Bow, London, E3 5LU

✉ bow@butlerandstag.com

www.butlerandstag.uk